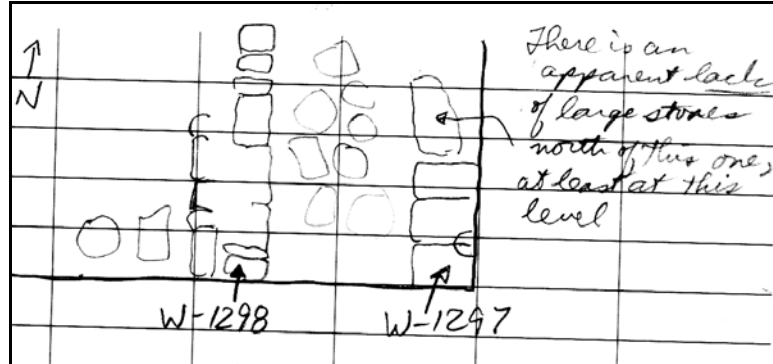


Hippos (Sussita) Excavations 2010 – 11th Season Daily Log + Drawing

Date: 05 July 10 Area: NEC Manager: Schuler

Squares	XX99/0	YY/ZZ1/2	YY/ZZ4	ZZ99	
Loci	L1219	L1219	L1219	L1226	
Baskets	2311	2312	2313	2310	
Walls	W1261, W1266, W1288, W1236, W1297, W1298				
Floors	F1294				

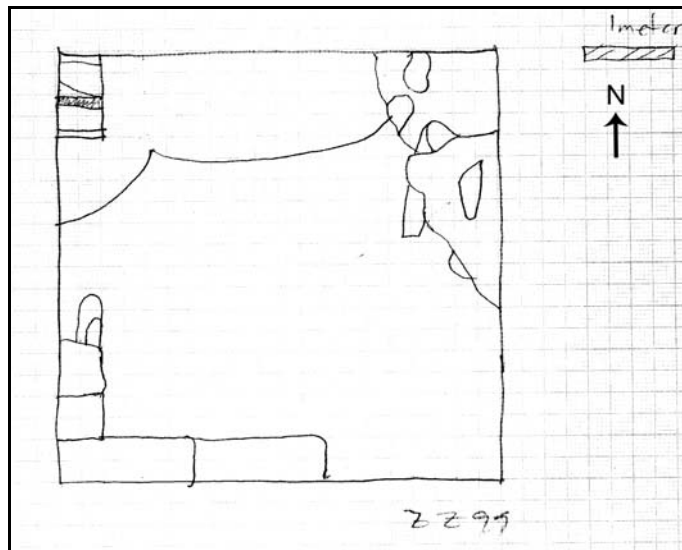
- Continued work in Square XX99/0
 - Goal = Searching for intersection between W1266 and north to south wall on west side of putative street.
 - Starting elevation = 132.210
 - Ending elevation = 131.718 (average east of W1298), 131.966 (average west of W1298), 132.181 (top of W1298)
 - Soil is Horizon A and tractor fill
 - Exposed the line of an alley (cardo 4n) on the east side of the square. The alley is 1.55m wide at the south end of the square.
 - The easterly north to south wall is W1297. We exposed it to the level of the top of the second course. This wall may stop 3.4 m from the south end of the square (or the top course(s) may be missing). Constructed mostly of ashlar of limestone.
 - The westerly wall (W1298) runs to length of the square. It is .90 m wide. This wall also is constructed of ashlar. A perpendicular wall may move to the west (very uncertain).
 - W1298 is fairly well-articulated to a depth of about 50cm on its eastern face, slightly exposing the second course of stones. The western face is exposed ca. 30 cm and seems to consist of small stones less well-shaped (interior wall?)



- The existence of the alley had been predicted in the excavation proposal. At the decumanus, the center-to-center measurement from Cardo 3N to this new Cardo 4N is 16.65m. The same center to center measurement in the current excavation area (at the north end of the streets) is 16.9m.
- Basket 2311 is from Locus 1219. That locus is mixed topsoil after tractor. In general, the contents date from 100 BC until 700 AD. Indicative types are ESA and SF.
- Item: 400. Description: fragment of a grinding stone. Discovered 180 cm from south edge of square and 110 cm from east edge of square in the topsoil/fill. The stone is 350 cm x 24 cm x 130 cm. One small foot is visible on the bottom.
- Continued work in Square YY/ZZ1/2
 - Goal = Follow W1261 and south stylobate of paved plaza to the east.
 - Starting elevation = 131.783
 - Ending elevation = 131.775 (W1261), 131.577 (average)
 - Soil is Horizon A and tractor fill.
 - Continued to level the square and reduce its average level.
 - Toward the end of the day, the top of W1261 began to appear about 30cm below the original surface.
 - Basket 2312 is from Locus 1219. That locus is the top layer. In general, the contents are very small pieces, dating from 500 AD until 700 AD. Indicative types are LRC; CRS. Residual types are few ROM.

- Item: 405. Description: cylinder shaped stone (pestal?) with the middle slightly curved in (8 cm x 5 cm x 6 cm) recovered 22 cm from south edge of square, 214 cm from east edge of square, 35 cm from surface.
- Continued work in Square YY/ZZ4
 - Goal = Follow W1288 and W1236 to east and clarify temporal relationship.
 - Starting elevation = 133.158 (wall), 133.158 (high), 132.804 (low)
 - Ending elevation = 132.518 (west, low), 132.916 (west high), 132.629 (east average), 132.820 (south average)
 - Soil started as Horizon A and tractor fill, but most of the square changed to Horizon B soil by the end of the day.
 - W1236 seems to extend to the east end of the square, although its exact extend requires greater clarification
 - 2 m from the east end of the square there appears to be a wall proceeding north from W1236. It too requires greater clarification.
 - A large coin (#401) was recovered from the fill north of W1236 in the SE quadrant of the square.
 - Basket 2313 is from Locus 1219. That locus is top soil after the tractor. In general, the contents are pieces of Beisan jars, dating from 500 AD until 700 AD. Indicative types are LRC; CRS. Residual types are a few ROM.
 - Item: 402. Description: A coin was recovered 200 cm from south edge of square and 86 cm from east edge of square. It was 30 cm from surface. The coin seems to be larger in size, roughly 3 cm x 3 cm, though not perfectly circular. Appears to have images on both sides. (Byzantine M coin.)
- Continued work in Square ZZ99
 - Goal = Expose rest of square to see stylobate and perhaps a bite of the floor to the north of the stylobate.
 - Starting elevation = 130.964 ("shelf")
 - Ending elevation = shelf to level of top of column (get later)
 - Soil is Horizon tractor fill, A, B
 - Removed the "shelf" to the proximate level of the top of the column base seen last year.
 - Unfortunately, strata are becoming mixed in the process.

- In the north balk, the lines of tractor fill are clearly visible.



- Basket 2310 is from Locus 1296. That locus is first locus below the top of W1266. In general, the contents are Lot's of Beisan jars and few shards of AMP (?), dating from 100 AD until 700 AD. Indicative types are CRS.
- Item: 403. Description: a stone circle/wheel (only half is present) was retrieved 320 cm from north of w1266, 523 cm from east of w1267, and 170 cm below the surface. Appears to have a smaller hole through its center, and a raised rim along the outside. 37 cm diameter, 18 cm radius, 12 cm thick, 6 cm to the outer ridge from center.
- Item: 404. Description: A small piece off a capital with a portion of an acanthus leaf found 200 cm from east of w1267, 46 cm from north of w1267, 283 cm from surface.