

Hippos (Sussita) Excavations 2010 – 11th Season Daily Log + Drawing

Date: 07 July 10 Area: NEC Manager: Schuler

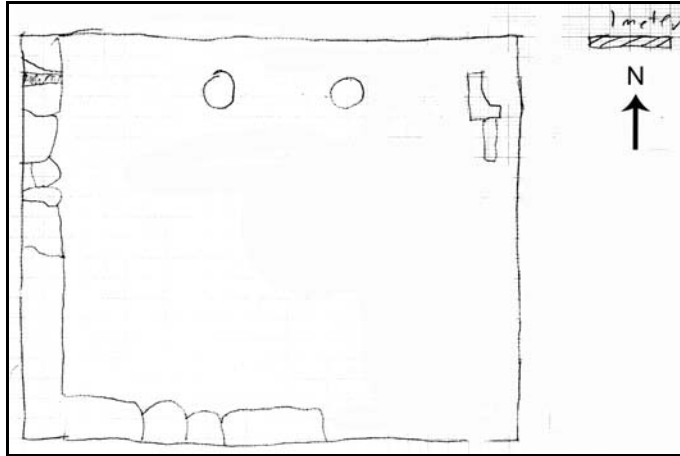
Squares	XX99/0	YY/ZZ1/2	YY/ZZ4	ZZ99	
Loci	L1226	L1219	L1226	L1901	
Baskets	2320	2321	2322	2319	
Walls	W1261, W1266, W1288, W1236, W1297, W1298				
Floors	F1294				

- Continued work in Square XX99/0
 - Goal = Searching for intersection between W1266 and north to south wall on west side of putative street.
 - Starting elevation = 131.705 (average of Cardo 4N), 131.453 (average SW quadrant), 131.526 (average NW quadrant)
 - Ending elevation = 130.868 (average NW), 130.969 (average SW)
 - Soil is Horizon B
 - Concentrated work in area west of W1298
 - Began to expose top of W1266, although there seems to be some damage to the top of the wall.
 - Only the northeast corner of the junction of W1298 and W1266 is clear.
 - Basket 2320 is from Locus 1219. That locus is topsoil after tractor work. In general, the contents are mixed periods from ROM to BYZ, 1 HRD lamp, dating from 50 BC until 700 AD. Indicative types are LRC.
 - Item: 409. Description: Smooth stone, egg-shaped (10 cm x 7 cm x 4.5 cm), possible pestal. Found 23 cm from north balk, 158 cm from west balk, 133 cm from surface.
 - Item: 410. Description: an iron spike 22.5 cm long found in the southwest part of the square.

- Continued work in Square YY/ZZ1/2
 - Goal = Follow W1261 and south stylobate of paved plaza to the east.
 - Starting elevation = 131.534 (average low), 131.625 (average high)

- Ending elevation = 131.198 (average fill), 131.179 (column), 131.599 (fixture? Pilaster?)
- Soil is Horizon A/B
- Finished L1219 soil and began to remove L1225 soil.
- A second column on the stylobate has appeared. The column is 42cm in diameter. The intercolumniation with the westerly column is 2.04m. Between the west column and the pilaster the distance is 1.65m.
- Basket 2321 is from Locus 1219. That locus is topsoil in square YY-ZZ / 1-2. In general, the contents are fragments of Beisan jars, BYZ cooking ware and Late ROM fine wares, dating from 500 AD until 700 AD. Indicative types are ARS; CRS; LRC. Residual types are 1 BG.
- Item: 408. Description: a metal shaft, possible auger, 96 cm long. It is highly corroded. Only one of the blades is still intact. Was found 6 July but removed 7 July. Modern.
- Item: 411. Description: marble crown molding with 2 grooves, 15 cm long at its widest point, 10 cm wide, retrieved 110 cm from north border of the square, 210 cm from east border, 75 cm from surface.
- Item: 412. Description: marble crown molding with 2 grooves and 1 rib (26 cm x 12 cm x 7.5 cm) recovered 110 cm from north balk, 210 cm from east balk, 75 cm from surface.
- Item: 413. Description: iron leaf-shaped blade, possibly from the auger found 6 July. A leaf-shaped blade with four holes in the center. Broken into two pieces but altogether is 14 cm x 10 cm at its farthest points.
- Continued work in Square YY/ZZ4
 - Goal = Follow W1288 and W1236 to east and clarify temporal relationship.
 - Starting elevation = 132.517 (average north of W1236), 132.924 (ashlar at east end (?) of W1236).
 - Ending elevation = 132.334 (north average), 132.412 (south average)
 - Soil is Horizon B
 - W1266 seems to form a corner and turn south (east side of the building?) 2.1m from the east line of the square.

- A second wall goes south from W1236 2.5m west of the wall forming the NE corner with W1236.
- 2.3m separates parallel walls W1236 and W1288, both of which seem to have a common easterly extent.
- Pottery is clustered in NW corner with some large glass pieces including a base.
- Basket 2322 is from Locus 1226. That locus is below the topsoil L1219 in square YY/ZZ/4. In general, the contents are fragments of Beisan jars, cooking and late ROM wares, dating from 500 AD until 700 AD. Indicative types are LRC; ESA. Residual types are few ROM.
- Continued work in Square ZZ99
 - Goal = Expose rest of square to see stylobate and perhaps a bit of the floor to the north of the stylobate.
 - Starting elevation = 129.072
 - Ending elevation = 128.539 (floor below step), 128.495 (west end of stylobate), 128.667 (east column base)
 - Soil is Horizon C
 - Uncovered floor previously exposed
 - Revealed a second column base with an approximate column diameter of 40cm
 - The intercolumniation from the pilaster to the west column is 1.45m; the intercolumniation between the first two columns is also 1.45. Based on the distance between W1267 and W1298, we estimate six columns will be visible on the stylobate.
 - There is severe tumble at the east side of the square. We are uncertain as to the source of the collapse.



- Basket 2319 is from Locus 1901. That locus is fill above F1294. In general, the contents are large pieces of Beisan jars (looks restorable), dating from 500 AD until 700 AD.
- Item: 407. Description: Bronze or copper medallion (7 cm diameter, 4 cm radius). Left is a semi-circle with spokes found near the west bench, but the area was completely cleaned after last year, so it was washed there during the winter season. 62 cm east of w1267, 143 cm north of w1266.