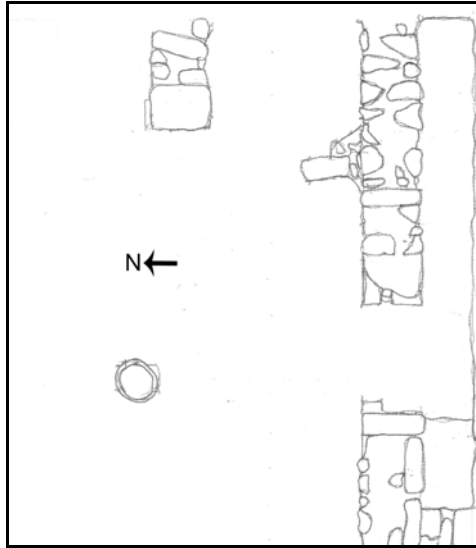


# Hippos (Sussita) Excavations 2010 – 11th Season Daily Log + Drawing

Date: 11 July 10 Area: NEC Manager: Schuler

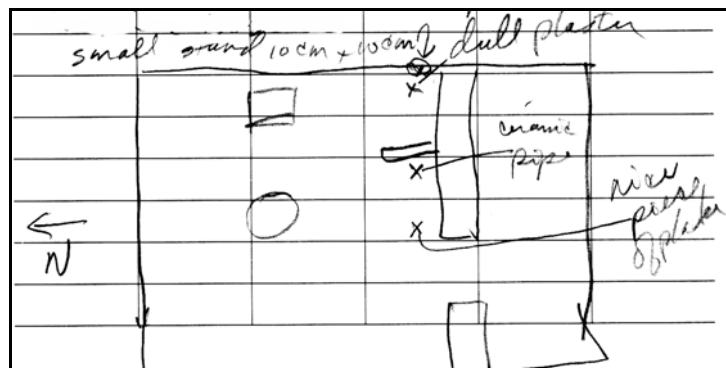
Squares	XXYY99	YY/ZZ1/2	YY/ZZ4	ZZ99	
Loci	1219	1226	1226	1299	
Baskets	2328	2329	2330	2327	
Walls	W1261, W1266, W1288, W1236, W1297, W1298, W1902, W1903, W1904				
Floors	F1294				

- Shifted work in Square XX99/0 to XXYY99
  - Goal = Searching for intersection between W1266 and north to south wall on west side of putative street.
  - Starting elevation = 130.647 (average NW), 130.862 (average SW)
  - Ending elevation = no measurement
  - Soil is Horizon B
  - Expanded the square 1.5m north and 2.5m to the west. Began removing fill.
  - Basket 2328 is from Locus 1219. That locus is top soil after tractor work. In general, the contents are mixed material, various periods, fragments of Beisan jars, dating from 100 BC until 700 AD. Indicative types are LRC.
  
- Continued work in Square YY/ZZ1/2
  - Goal = Follow W1261 and south stylobate of paved plaza to the east.
  - Starting elevation = 130.912
  - Ending elevation = 130.703
  - Soil is Horizon B
  - Continue to meet heavy destruction fill.
  - Some faded but painted plaster fragments near W1261.
  - No definite walls, but may see possibilities on line of W1904.



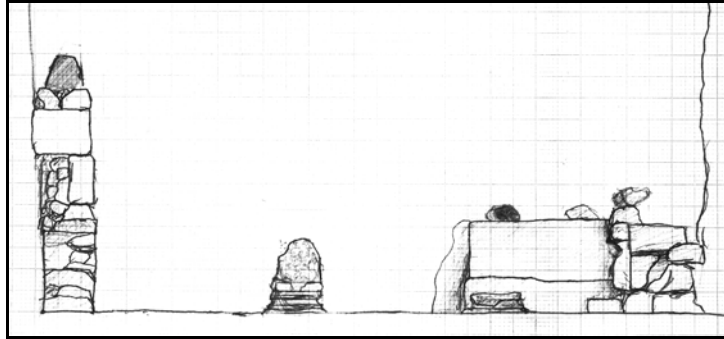
- Basket 2329 is from Locus 1226. That locus is below the level of L1219 in square YYZZ1/2. In general, the contents are fragments of Beisan jars, dating from 500 AD until 700 AD.
- Item: 435. Description: marble cornice with two grooves, rounded on top (length 16 cm, width 3.5 cm, height 7 cm) retrieved 122 cm north of w1261, 233 cm from east balk, 116 cm from surface.
- Item: 436. Description: marble cornice with two v-shaped grooves (length 15 cm, width 6 cm, height 10 cm) found 171 cm north of w1261, 261 cm from east balk, 121 cm from surface.
- Item: 437. Description: marble cornice with one concave groove and one v-shaped groove (length 22 cm, width 5 cm, height 9.5 cm) recovered 86 cm from north balk, 274 cm from east balk, 107 cm from surface.
- Item: 438. Description: rounded marble cornice (length 21 cm, width 4 cm, height 7 cm) found 60 cm from north balk, 284 cm from east balk, 114 cm from surface.
- Item: 439. Description: marble cornice with two grooves (length 14.5 cm, width 5 cm, height 13 cm) retrieved 150 cm north of w1261, 295 cm from east balk, 106 cm from surface.
- Item: 441. Description: marble cornice with one groove (length 25 cm, width 4 cm, height 7 cm) recovered 156 cm from north balk, 330 cm from east balk, 114 cm from surface.

- Item: 442. Description: marble cornice with one groove (length 29 cm, width 4 cm, height 8 cm) found 44 cm from north balk, 285 cm from east balk, 110 cm from surface.
- Item: 443. Description: marble cornice (length 21 cm, width 3.5 cm, height 8 cm) found 27 cm from north balk, 280 cm from east balk, 106 cm from surface.
- Item: 444. Description: marble cornice with two grooves the back of which is more rounded than square (length 30 cm, width 6 cm, height 7 cm) retrieved 54 cm north of w1288, 306 cm from east balk, 116 cm from surface.
- Item: 445. Description: stone base or pedestal. Square base (16.5 x 16.5 cm) with a raised center (10 x 10 cm). Four small feet on each corner. Possibly the base for a statue. Retrieved 81 cm north of w1261, 10 cm from east balk, 124 cm from surface.

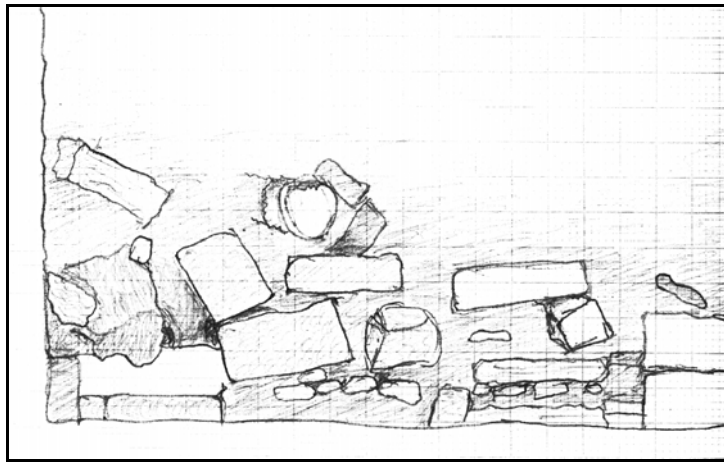


- Continued work in Square YY/ZZ4
  - Goal = Follow W1288 and W1236 to east and clarify temporal relationship.
  - Starting elevation = 131.958 (east), 131.966 (west)
  - Ending elevation = 131.802 (east), 131.545 (west),
  - Soil is Horizon B
  - Continued clarifying walls.
  - W1288 seems to end at W1904 with another wall continuing to the east.
  - Basket 2330 is from Locus 1226. That locus is below the top soil of L1219 in square YY/ZZ4. In general, the contents are Beisan jars with few residual ROM, dating from 500 AD until 750 AD. Indicative types are LRC. Residual types are few ROM.

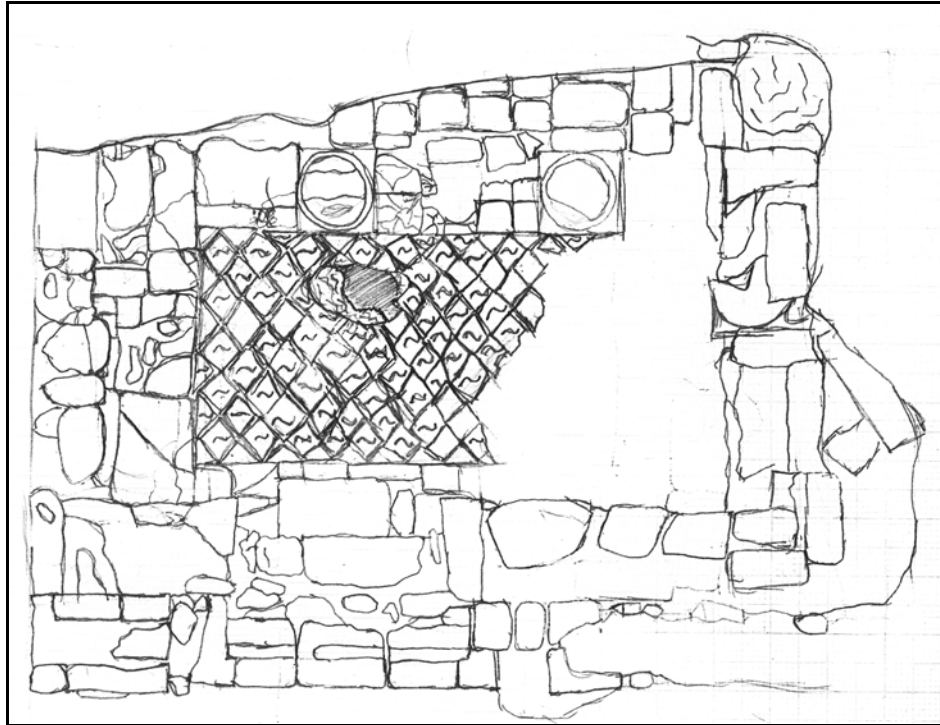
- Item: 440. Description: stone foot from a possible grinding bowl (foot: 11 cm and 13 cm long, 9 cm wide; rim: 23 cm long, 5 cm wide; total height: 22 cm) excavated 74 cm from north of w1236, 377 cm from east balk, 115 cm from surface.
- Completed initial work in Square ZZ99
  - Goal = Expose rest of square to see stylobate and perhaps a bit of the floor to the north of the stylobate.
  - Starting elevation = 128.539 (floor below step), 128.495 (west end of stylobate), 128.667 (east column base)
  - Ending elevation = 128.471 (floor south of basin), 128.826 (first shelf of basin), 128.306 (top of basin), 128.468 (tesserae in SE corner), 128.487SE corner of east column base.
  - Soil is ashy grey.
  - 3.53-3.43 north of W1266 is a plastered fixture in the Northeast corner of the square. Its easterly edge is closer to W1266 (343 cm vs 353 cm at the westerly edge). The fixture is 1.43m from east to west and is plastered with a hard plaster that has survived the centuries. The vertical edges curve in to the north. The plaster shows some slight curving onto the stone paving, on the top of which the fixture is situated. At 35cm above the floor is a shelf 20cm deep. The plaster curved down to cover the marble slabs used to make the shelf. The next level is an additional 56 cm tall. The top surface is again faced with marble slabs. 18-20 cm in the plastering curves down on the south and west sides, confirming that the fixture is some sort of water installation (above-ground *impluvium*?). The east of the fixture overlays a step (17cm high and 24 cm deep). The next step rises to the level of the first shelf. Plaster from the fixture covers the west face of the second step. This second step is topped by a thin marble slab. The steps abut the masonry pedestal.



- The masonry pedestal is 110cm north to south (the east to west dimension is unknown). The masonry pedestal has two layers of plaster on the north side, the outer layer of which flow onto the marble surface of the shelf. The pedestal is 1.83 m north of W1266. The pedestal is 4.80m from W1267.
- There is a column base in the east balk at the approximate top level of the pedestal. However, it is smaller with a 44cm diameter and a 36 cm column shaft.



- The opus sectile floor overlays an earlier mosaic floor made of industrial sized tesserae set diagonally. Small fragments remain in the SE corner of the floor. The patch of tesserae is 25 x 20 cm. The tesserae are white, light tan, and pink in color. There are a total of twenty three tesserae in situ. Some evidence that plaster later topped over the tesserae.
- The opus sectile partially separates the columns. There is no distinct stylobate showing.



- The benches on the south wall are 53cm deep and 44 cm high and covered with plaster. The opus sectile and benches are secondary to the earlier mosaic floor.
- Basket 2327 is from Locus 1299. That locus is a continuation above the accumulation of L1901, but mixed (?). In general, the contents are fragments of Beisan jars (check restoration), dating from 500 AD until 700 AD.