

Hippos (Sussita) Excavations 2011 – 12th Season

Daily Log + Drawing

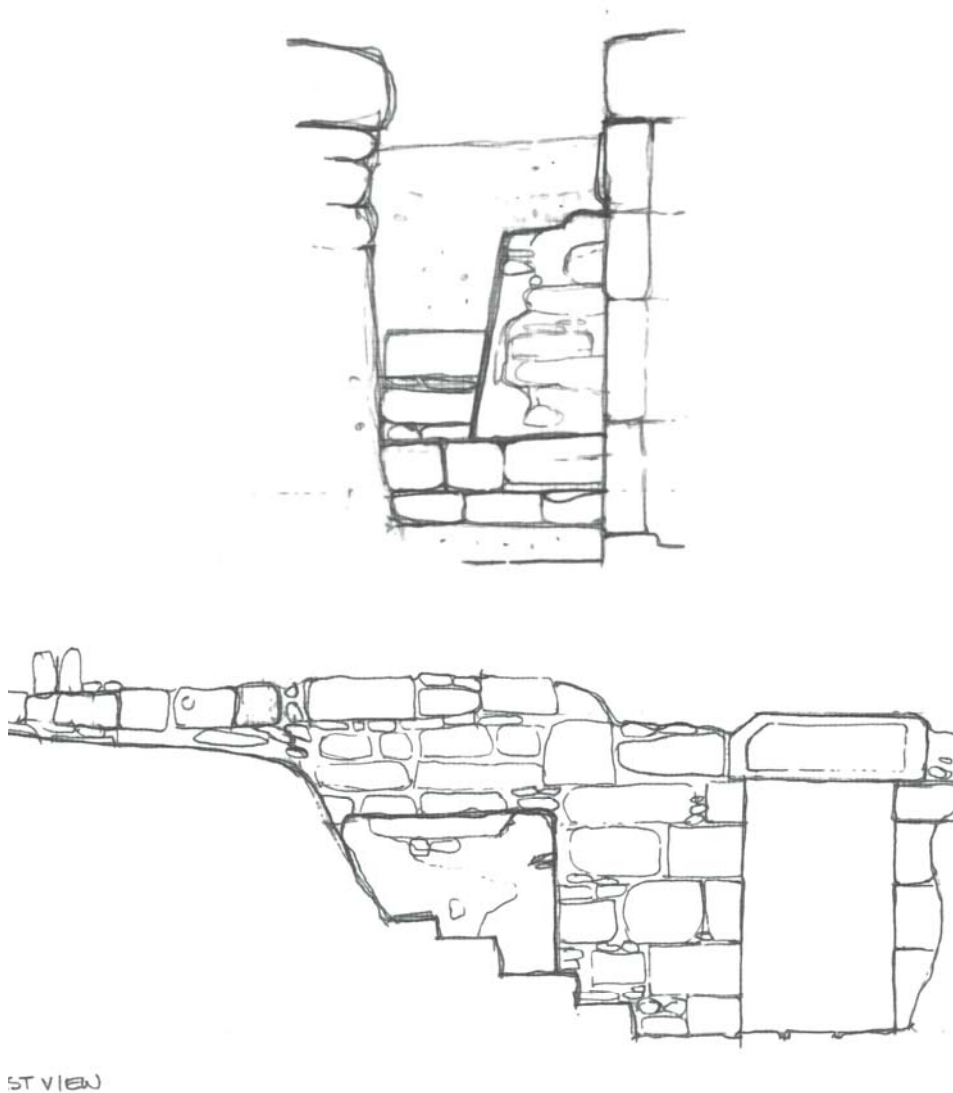
Date: 12 July 11 Area: NIP Manager: Schuler

Squares	XX99E	Xx99w	XX/YY0	F10e	F10(w)	E9	E10	F9
Loci	1924	1907	1930	1928	2008	1929	1929	1925
Baskets	2415	2416	2417	2418	2419	2420	2421	2422
Walls								
Floors								

1) Northeast Zone

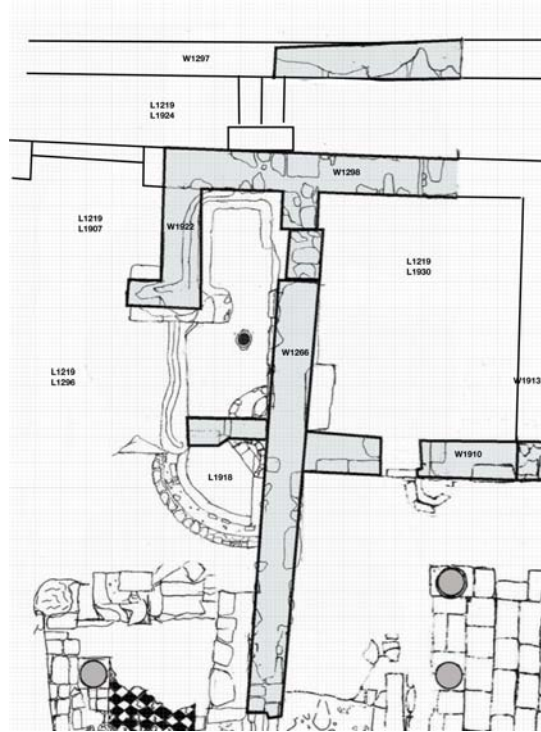
a) Continued work in Square XX99.

- i) Goal = Clarify more of Cardo 4 to the north and a possible entrance into the garden to the west.
- ii) Basket = 2415 (Small pieces of Beisan jars, 400 CE – 600 CE)
- iii) Basket = 2416 (Little pottery; Beisan jars & gritty cooking ware fragments, 400 CE – 600 CE)
- iv) Starting elevation = 130.08
- v) Ending elevation = 129.53
- vi) Soil is Horizon B
- vii) Stair case down to garden entrance
 - (1) bedrock 130.70
 - (2) Top step width 49, height 22, elevation 130.55
 - (3) Second step tread 43, width 53, height 27, elevation 130.35
 - (4) Third step tread 38, width 124 (three stones), height 30, elevation 130.08
 - (5) Fourth step tread 36, width 121 (two stones), height 23, elevation 129.77
 - (6) Fifth step tread 32, width 121 (two stones), elevation 129.53
- viii) Basin is 123 high



b) Continued work in Square XX/yy0.

- i) Goal = Excavate NE hall of peristyle court
- ii) Basket = 2417 (Mixed periods from EROM to BYZ; large pieces of mortarium; pieces of Beisan and ribbed jars; Indicative Wares ESA; LRC (Hayes, form 10); 0 – 600 CE)
- iii) Starting elevation = 130.91
- iv) Ending elevation = 130.79
- v) Soil is Horizon A.



2) Southwest Zone

a) Continued work in Square E10.

- i) Goal = identify the structure and function of Building Complex Alpha
- ii) Basket = 2420
- iii) Basket = 2421 (Large pieces of Beisan, ribbed (MROM ?) jars and large fragments of coarse UMM ? pithos; very few gritty cooking ware; Indicative Wares CRS; LRC (Hayes, form 3); Residual Few HEL / EROM (none kept); 450 CE - 700 CE)
- iv) Starting elevation = 128.85
- v) Ending elevation = 128.59
- vi) Removed a column drum (#535, length: 58 cm, diameter at one end: 36 cm, diameter at other end: 34 cm) and a column base from the fill of E9 (#533, length: 47 cm, base diameter: 46 cm, column diameter: 36 cm). Otherwise fill is tan and gravel-like.
- vii) Also recovered a fragment of an acanthus leaf (#538 6.0x10.0x2.0cm)

b) Continued work in Square F10.

- i) Goal = identify the structure and function of Building Complex Alpha

- ii) Basket = 2418 (Beisan jars; Indicative Wares CRS; 400 CE – 600 CE)
- iii) Basket = 2419 (Large pieces of Beisan jars and some cooking ware; Indicative Wares LRC; 500 CE - 650 CE)
- iv) Residual
- v) Basket = 2422
- vi) Starting elevation = 129.28 (high), 129.03 (low)
- vii) Ending elevation = 128.99
- viii) Soil is Horizon B
- ix) Lintel stone 39 x 187 in F9
- x) Lowered level of F9 to assist removal of stones
- xi) In F10 west we are nearing the floor
- xii) Watering bowl in NE corner of SW room (#536)
 - (1) Internal diameter 41.5 top 38.5 bottom
 - (2) External diameter 59
 - (3) Internal depth 15-18
 - (4) Depth of main bowl
 - (5) Diameter of base narrow 34
 - (6) Height of base 13
 - (7) Total depth 29
 - (8) Modified anta
 - (9) floor elevation 127.89
- xiii) Nail in SE corner (#534, Body fragment, no head present and broken off near the tip, found in the western half of F10, length: 9 cm, diameter at one end: 1.2 cm, diameter at other end: .9 cm)
- xiv) Lock? Near doorway (#532 The 2 pieces are fused together, Length: 5 cm, Width: 2.5 cm, Diameter: 3 cm)
- xv) Second nail, bent (#537, from top to bend: 8 cm, from bend to point: 1.5 cm)

