

Hippos (Sussita) Excavations 2011 – 12th Season

Daily Log + Drawing

Date: 13 July 11 Area: NIP Manager: Schuler

Squares	XX99	XX/YY0	E9	E10	F10e	F10(w)	F9
Loci	1907	1930	1929	1929	1928	2008	1925
Baskets	2423	2424	2425	2426	2427	2428	2429
Walls	1922						
Floors	2009						

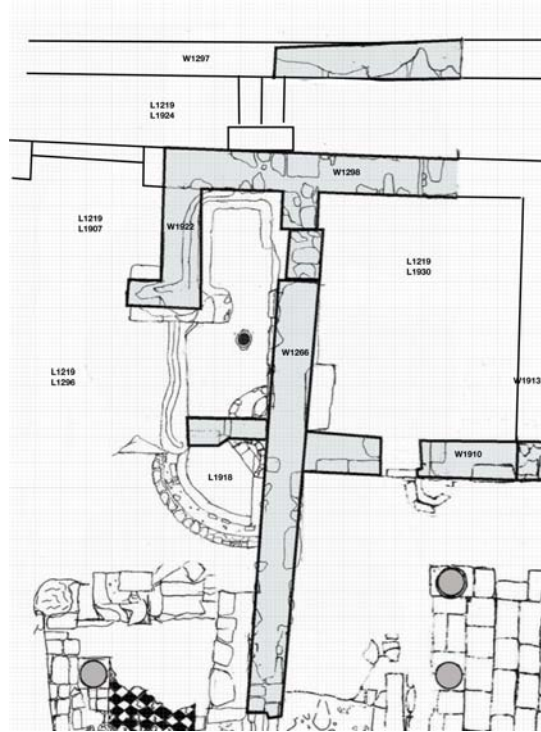
1) Northeast Zone

a) Continued work in Square XX99.

- i) Goal = Clarify more of Cardo 4 to the north and a possible entrance into the garden to the west.
- ii) Basket = 2423 (Mostly non-indicative shards; Beisan shards; mixed periods; 200 CE – 600 CE)
- iii) Starting elevation = 129.53
- iv) Ending elevation = 129.70 (slough fell in)
- v) Soil is Horizon B
- vi) Removed fill from west of threshold and north of W1922
- vii) A small staircase is appearing on the north side of W1922, rising to the west

b) Continued work in Square XX/yy0.

- i) Goal = Excavate NE hall of peristyle court
- ii) Basket = 2424 (Medium pieces of EROM jars and ESA; with some KFH; Indicative Wares KFH; ESA; Residual BG; Intrusive 2-3 BYZ; 100 BC - 100 CE)
- iii) The early pottery at this high level is probably the result of the later digging of an olive pit to the immediate north of W1226. Debris from the bottom of the pit was scattered on the neighboring surface. Today we dug through that debris.
- iv) Starting elevation = 130.79
- v) Ending elevation = 130.56
- vi) Soil is Horizon B.
- vii) Lowering the level and identifying the insides of the walls.

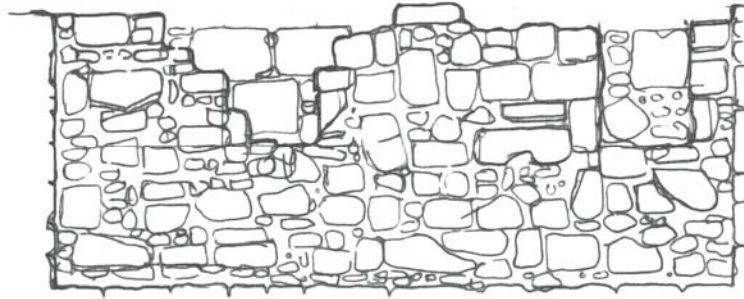


2) Southwest Zone

a) Continued work in Square E9/10.

- i) Goal = identify the structure and function of Building Complex Alpha
- ii) Basket = 2425 (Large pieces of Beisan jars; Indicative Wares LRC (Hayes, form 3; 450 CE – 700 CE)
- iii) Basket = 2426 (Large and restorable pieces of Beisan jars and restorable gritty cooking ware; Indicative Wares LRC (Hayes, form 3); ICW (?); Residual 1 Chalcolithic; 500 CE - 750 CE)
- iv) Starting elevation = 128.59
- v) Ending elevation = 128.34
- vi) Soil is tan and gravel-like.
- vii) Clean to within 5 cm of floor.
- viii) Probe of floor shows it to be a stone floor
- ix) Swept with metal detector for coins.
- x) Possible stone weight found in E9
- xi) Possibly restorable thin-walled pot discovered
- xii) Will sift final level tomorrow

- xiii) Recovered a stone ball (#539, game piece?) 3 cm diameter
 - xiv) Broken piece of marble revetment (#540, 27 x 20 x 2 cm)
 - xv) Broken stone tie off? (#541, 16 x 9 x 8 cm, hole is 2.5 cm diameter)
- b) Continued work in Square F10.
- i) Goal = identify the structure and function of Building Complex Alpha
 - ii) Basket = 2427 (Large pieces of Beisan jars; gritty cooking ware (see previous basket for R.) Indicative Wares FBW; 500 CE – 750 CE)
 - iii) Basket = 2428 (Medium pieces of Beisan jars and some gritty cooking ware; fragments of UMM ? pithos or tabun; Indicative Wares LRC (Hayes, form 3); 450 CE – 700 CE)
 - iv) Basket = 2429 (Little pottery; Beisan jars; gritty cooking ware; 500 CE – 700 CE)
 - v) Starting elevation = 128.99
 - vi) Ending elevation = 128.95
 - vii) Soil is Horizon B
 - viii) Seem to be getting to the end of the heavy stones in the fill
 - ix) Possibly restorable pot near window wall
 - x) From the fill came #544, a marble acanthus leaf fragment, length: 8 cm, width: 5 cm, thickness: 4 cm
 - xi) #543 is a nail fragment w/o head 6 cm long and 1.5 cm in diameter
 - xii) #545 is a nail fragment w/o head 6 cm long and 1 cm in diameter
 - xiii) Change loci tomorrow
- c) Continued work in Square G10.
- i) Goal = identify the structure and function of Building Complex Alpha
 - ii) Basket = none
 - iii) Starting elevation = 127.89
 - iv) Ending elevation = 127.89
 - v) Exposing floor
 - vi) No surprises uncovering the floor
 - vii) Will draw the floor and an elevation of the north wall showing the niches.



NORTH WALL ELEVATIONS

SITE: F-10 WEST

JULY 14 2011

W1262
South face



SCALE: 2.5CM TO 1M

