

Hippos (Sussita) Excavations 2011 – 12th Season Daily Log + Drawing

Date: 14 July 11 Area: NIP Manager: Schuler

Squares	XX99	XX/YY0	E9/E10	F9	F10	F10(w)
Loci	1907	1930	1929	1928	1931	2008
Baskets	2430	2431	2432	2434	2435	2436
Walls	1888, 1923					
Floors	1929					

1) Northeast Zone

a) Continued work in Square XX99.

- i) Goal = Clarify more of Cardo 4 to the north and a possible entrance into the garden to the west.
- ii) Basket = 2430 (Medium sized shards; Beisan jars; lamp; pipe; 300 CE – 600 CE)
- iii) Starting elevation = 129.70 (slough fell in)
- iv) Ending elevation = 129.83 (more slough)
- v) Soil is Horizon B
- vi) Removed rest of slough to the level of unexcavated soil

b) Continued work in Square XX/yy0.

- i) Goal = Excavate NE hall of peristyle court
- ii) Basket = 2431 (Mainly body shards of EROM jars with some admixture of Beisan jars; Indicative Wares KFH; AMP; 100 BC – 100 CE; see previous note on such remains at this level)
- iii) Starting elevation = 130.79
- iv) Ending elevation = 130.43
- v) Soil is Horizon B.
- vi) Continued to reduce level
- vii) Difficulty with NW corner discerning what is destruction fill from what might be residual structure.

c) Conservation work resumed on the fountain.



610/69 FLOOR PLAN



WALL 1926 WEST ELEVATION

JULY 18, 2011

East face 1926
before demolition

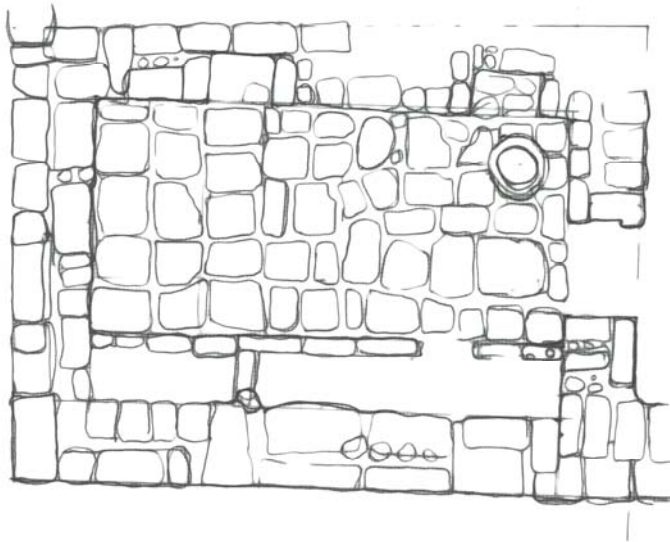


b) Continued work in Square F10.

- i) Goal = identify the structure and function of Building Complex Alpha
- ii) Basket = 2434
- iii) Basket = 2435 (Large pieces of Beisan jars; gritty cooking ware (R with L.1928); 600 – 750 CE)
- iv) Basket = 2436 (Little pottery; few fragments of Beisan jars; AMP; UMM ? Coarse pithos; 450 CE – 700 CE)
- v) Starting elevation = 128.99
- vi) Ending elevation = 128.59
- vii) Soil is Horizon B
- viii) Now below level of heavy fill
- ix) Bench on south wall (W1888) at elevation 128.68. Proceeds east from W1923 for 2.59 m. The bench is 80 cm wide.
- x) Nail with head and point (#548, Length: 6 cm, Head width: 1.5 cm)

c) Continued work in Square G10.

- i) Goal = identify the structure and function of Building Complex Alpha
- ii) Starting elevation = 127.89
- iii) Ending elevation = 127.89
- iv) Finished cleaning and drawing

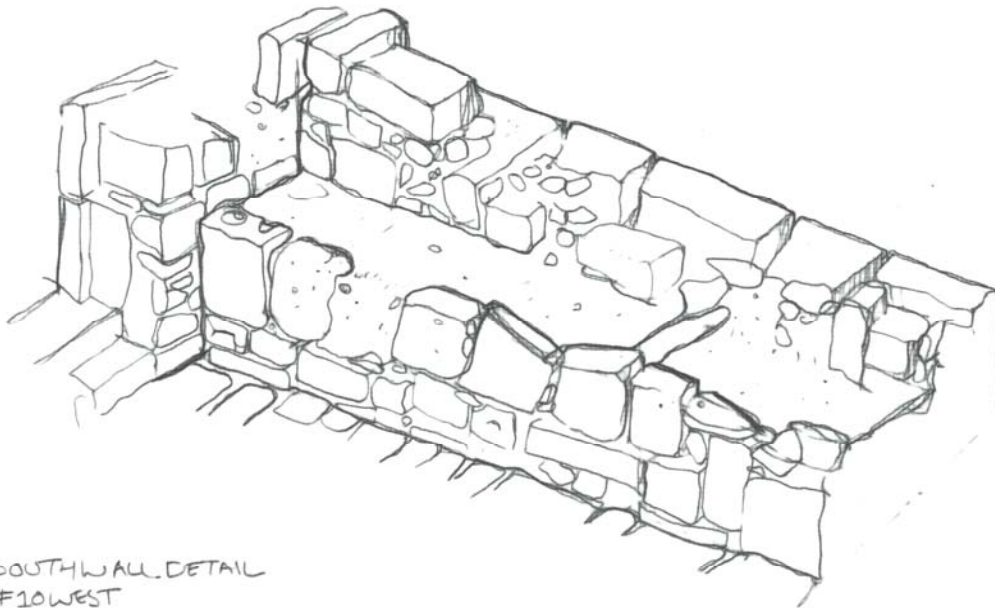


A

FLOOR PLAN

SITE F-10 WEST JULY 14 2011

2m
SCALE 2.5CM TO 1M



SOUTHWALL DETAIL
F10WEST

- v) In its final phase, the room seems to have functioned as a place for storing animals due to the presence of a watering bowl and an animal tie up on the east side of the room. However, the door frame was designed to close and lock the door from inside the room. Such would not be the case for an animal pen, thus suggesting that evidence be sought for a prior function of the room.

