

Hippos (Sussita) Excavations 2011 – 12th Season Daily Log + Drawing

Date: 24 July 11 Area: NIP Manager: Schuler

| Squares | XXYY0 | F9/F10 | G9 | YY0 |
|---------|------------------|--------|------|------|
| Loci | 1938 | 1926 | 1893 | 1918 |
| Baskets | 2452 | 2453 | 2454 | 2455 |
| Walls | 1266, 1910, 2007 | | | |
| Floors | 1939 | | | |

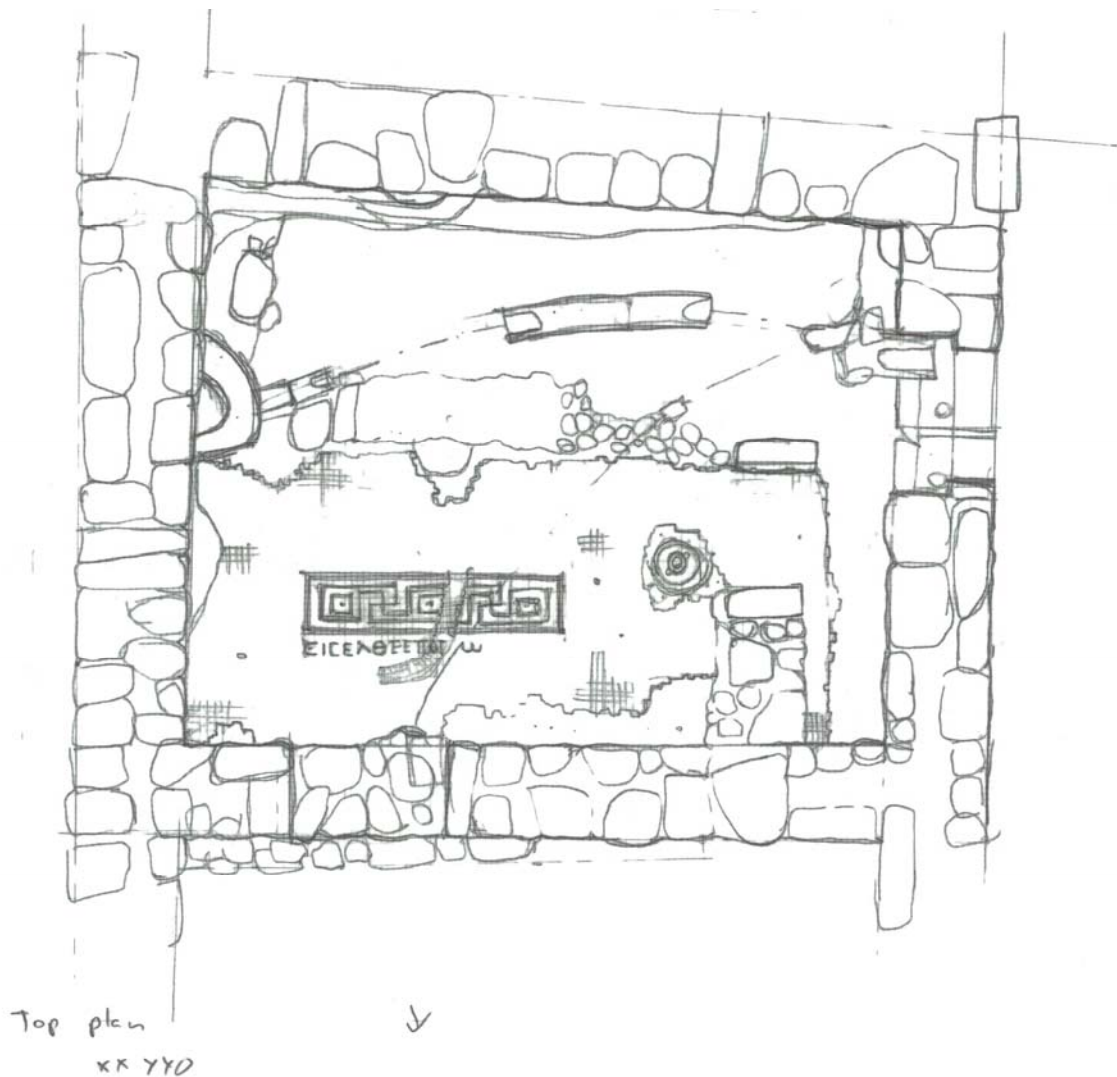
1) Northeast Zone

a) Continued work in Square XX/yy0.

- i) Goal = Excavate NE hall of peristyle house
- ii) Basket = 2452 (Little pottery; pieces of ribbed and Beisan jars; gritty cooking ware, 250 CE – 500 CE)
- iii) Basket = 2455
- iv) Starting elevation = 130.08 (top of channels), 129.84 (mosaic)
- v) Ending elevation = 129.84
- vi) Soil is Horizon B.
- vii) Slowly exposed and removed drain tile
- viii) Plaster on east wall (W1910) may suggest that the room was converted into a low tank for water.
- ix) Small section of bedrock exposed next to east wall base.
- x) Pipe from north doorway was blocked with plaster about half way through room.
- xi) The mosaic (F1939) was seemingly cut about half way across the room leaving most of the north side intact. On the south half, the pipe was sectioned and left partially in place.
- xii) A pipe leading into the SW corner basin suggests that both pipes joined together before entering the basin. The pipe coming into the basin at a lower level has an unknown source.
- xiii) An inscription was discovered just south of the blocked entrance in the north wall (W1266). It is almost intact. The third to last letter is missing and the second to

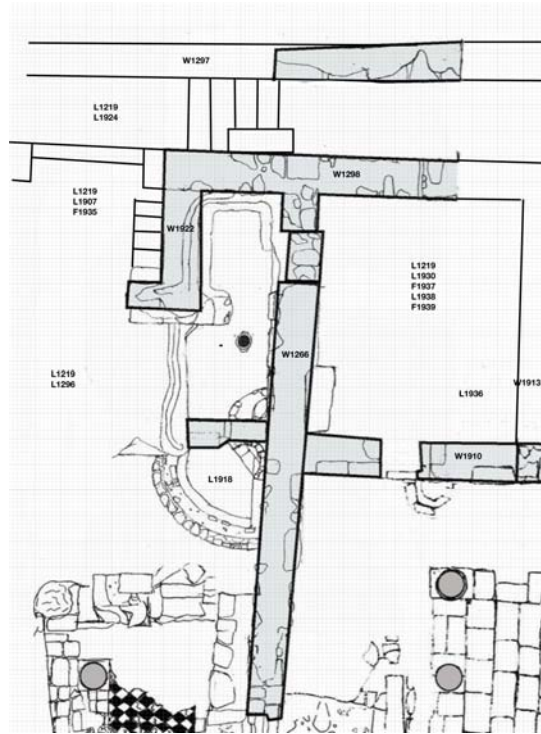
last letter is partially gone. We reconstruct the inscription to read: εἴσελθε ἐπ’ ἀγαθῶ “enter for good.” The inscription was to be read by persons entering through the now blocked doorway from the garden. The inscription is centered on the doorway. We therefore identify the northeast hall as an entrance foyer for the house. A geometric band crosses the room from east to west just south of the inscription.

- xiv) #610 is a section of the drain pipe removed from the section of the southeast side of the room (Length: 42 cm, Width: 7 cm, Rim diameter: 5.5 cm)



- b) Continued work in the fountain.
 i) Goal = Excavate the rest of the pool of the fountain

- ii) Removed some of the remaining fill from the fountain. Many drain pipe fragments that are of similar diameter to the main fountain.



2) Southwest Zone

a) Continued work in Square F9/10.

- i) Goal = remove unstable portions of the window wall
- ii) Basket = 2453
- iii) Starting elevation = 129.88
- iv) Ending elevation = 129.88
- v) Removed fill from doorway.
- vi) Opened up window wall. Some work remains on each end.
- vii) #596 is a nail fragment without head or tip (Length: 4 cm, Width: .5 cm)



- a) Continued work in Square G9.
- i) Goal = Excavate NW room of alpha complex
 - ii) Basket = 2454
 - iii) Starting elevation = 130.58
 - iv) Ending elevation = 129.08
 - v) Soil is Horizon B.
 - vi) Used tractor to remove fill put in to create a bridge
 - vii) Still no doorway out of alpha building.
 - viii) Possible niche in north wall (W2007).
 - ix) Recovered a nail fragment from the door jamb (#594, Head width: 3 cm, Length: 5.2 cm, Almost no shaft (2.2 cm wide), Length below the head: 3.9 cm)

